



# Maths Knowledge Organiser - Year 1

## Weight and volume

### Key Knowledge:

#### Key Vocabulary:

- Capacity
- Mass
- Weight
- Volume
- Empty
- Nearly empty
- Half full
- Nearly full
- Full
- Heavy
- Light

#### Capacity and Volume

We can use different containers to measure volume.

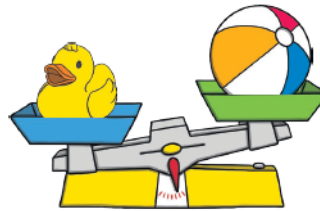


**Capacity** is the total amount of liquid a container can hold.

**Volume** is the amount of liquid that is in the container. This can vary.

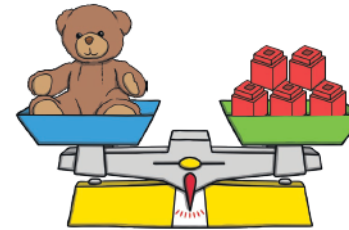
#### Compare Mass

The duck is **heavier** than the ball.  
The ball is **lighter** than the duck.

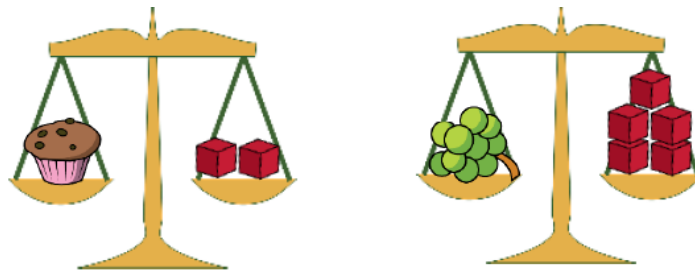


#### Measure Mass

The teddy **weighs** the same as 5 cubes.  
They are **balanced**.



#### Compare mass

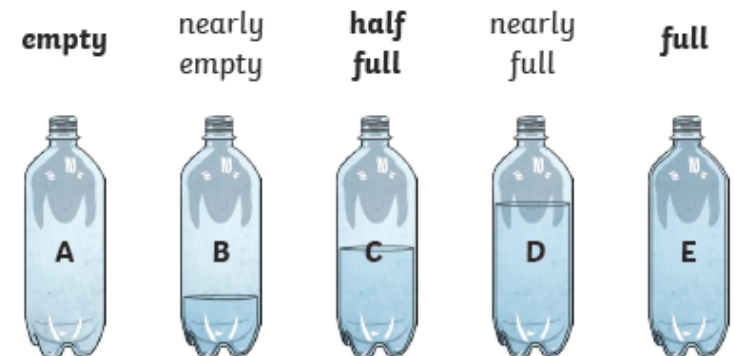


The cupcake weighs 2 cubes.

The grapes weigh 5 cubes.

The cupcake is lighter than the grapes. (*heavier/lighter*)

#### Compare capacity



empty

nearly empty

half full

nearly full

full

A

B

C

D

E